

Aboriginal homelessness research summary

Addressing Aboriginal homelessness Forum

15 – 16 AUGUST 2017



Homelessness NSW



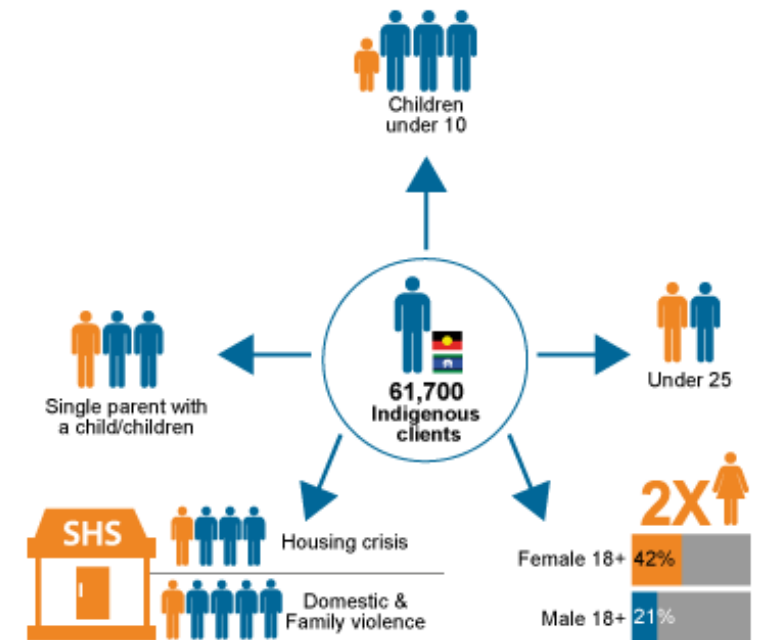
AIHW data (national)

- Aboriginal peoples and Torres Strait Islanders continue to be over-represented in both the national homeless population and as users of specialist homelessness services
- Aboriginal peoples and Torres Strait Islanders made up 24% (n= 61,700) of those accessing specialist homelessness services in 2015–16
- Up 16% from 2014–15



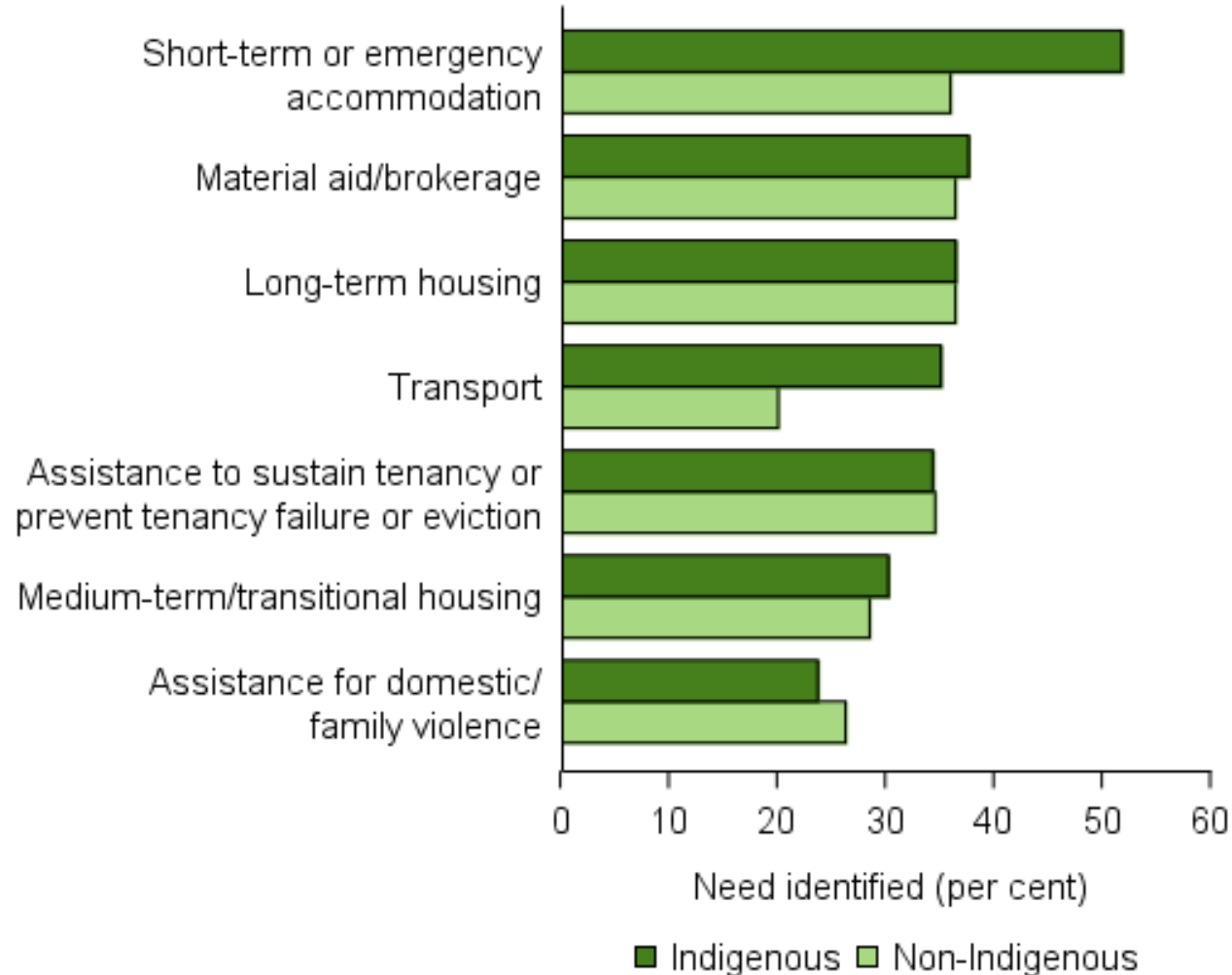
AIHW data (national)

- **1 in 4** Indigenous clients (23%) were children aged under 10
- **1 in 4** Indigenous clients sought homelessness services because of a housing crisis (25%)
- **1 in 3** Indigenous clients were living as a single parent with a child or children (36%)



AIHW data (national)

Type of assistance needed



AIHW data (NSW)

- In NSW 18,535 Indigenous clients accessed a SHS in 2015/16
- 59.3% male, 40.7% female
- 742.3 clients per 10,000 Indigenous people

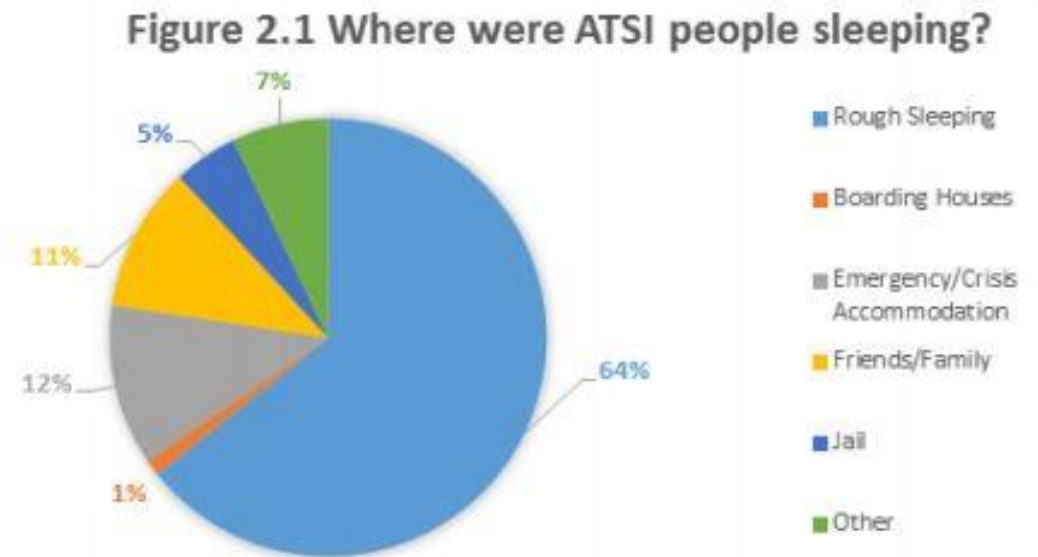
ICS Registry Week 2015

- Conducted in 2015
- Health, housing needs survey
- 516 people across the City of Sydney



ICS and Indigenous homelessness

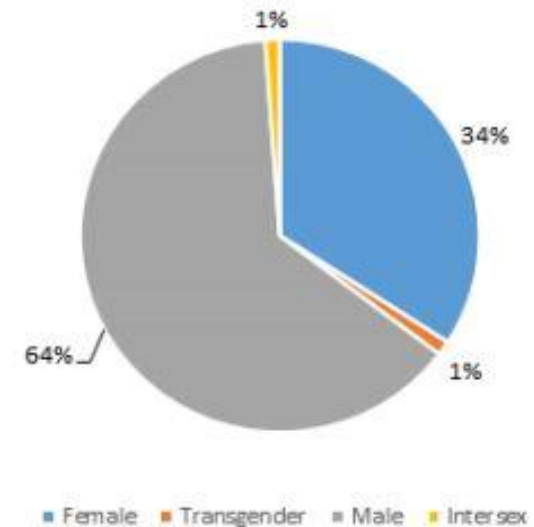
- 17 per cent of homeless respondents were Aboriginal or Torres Strait Islander
- Majority of respondents were sleeping rough (64 %)



ICS and Indigenous homelessness

- 64% of Aboriginal and Torres Strait Islander homeless were male
- Of those who participated in the Registry, 74 were over 25 years old and 12 were under 25 years

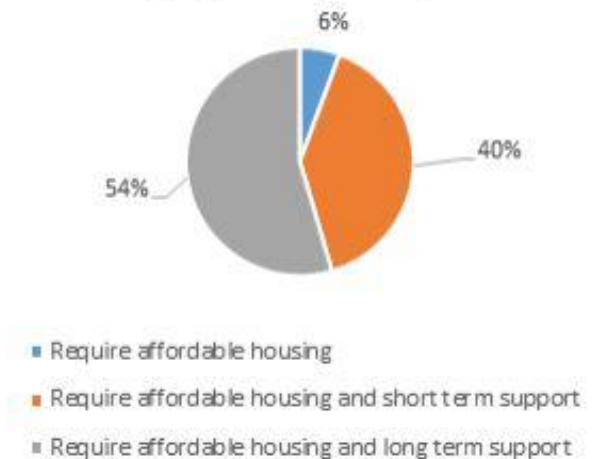
Figure 2.2 Gender of ATSI participants



ICS and Indigenous homelessness

- 54% required housing with intensive support
- 40% needed short term support with housing they could afford
- 6% only required housing to exit homelessness

Figure 2.3
Triaging ATSI participants



ICS and Indigenous homelessness

Physical health

- 34% (n=29) reported experiencing **asthma**
- 12% (n=10) reported **diabetes**
- 42% (n=36) reported contracting **Hepatitis C**
- 7% (n=6) reported **kidney disease**
- 10% (n=8) indicated a diagnosis of **emphysema**
- 9% (n=7) reported of having **cancer**
- 6% (n=5) reported a diagnosis of **HIV/AIDS**
- 14% (n=12) reported a **liver disease** or **cirrhosis**
- 19% (n=16) reported **heart disease** or **arrhythmia**
- 61% (n=52) identified having **dental** problems

ICS and Indigenous homelessness

Drugs and alcohol

- 54% (n=46) reported using intravenous drugs
- 54% (n=46) reported using alcohol daily for 30 days straight
- 77% (n=65) reported substance abuse

Mental health and disability

- 42% (n=36) reported seeing a professional about a mental health issue in the last 6 months
- 37% (n=31) reported a diagnosis of a learning development or developmental disability
- 61% (n=52) reported having a brain injury
- 23% (n=19) indicated that they had a permanent physical disability that limits their mobility

ICS and Indigenous homelessness

Trauma

- 55% (n=47) reported experiencing emotional, physical, psychological, sexual or other abuse prior to becoming homeless
- 38% (n=32) reported self-harming while being homeless

Interaction with the justice system

- 71% (n=61) indicated stints in prison or detention
- 83% (n=71) had been arrested
- 49% (n=42) had been victim of violence while homeless

2017 SHS Workforce Survey

- Aboriginal people and Torres Strait Islanders make up 25% of homelessness population in NSW
- 9% of SHS staff indicated they were of Aboriginal or Torres Strait Islander descent

Table 3 Cultural identity

	%	
Aboriginal/and/or Torres Strait Islander	9.37%	31
From a culturally or linguistically diverse background	12.99%	43
Prefer not to say	0.91%	3
None of the above	76.74%	254
Total		

Supporting Aboriginal workers

Aboriginal staff identified needs for support

- more cross cultural competency training for the sector as a whole (23%)
- support for networking and collaboration between Aboriginal services and with non-Aboriginal services (20%)
- greater access to training in general for Aboriginal staff (10%)
- increase in funding and resources for Aboriginal services (10%)

