



# SERVICES DIRECTORY







## Who are we? About Bungree Aboriginal Association

Bungree Aboriginal Association has been operating as a registered not for profit organisation since 7 July 1995. Bungree has been providing services to children, families, the elderly, disabled and disadvantaged for over 20 years.

We are an Aboriginal community organisation which delivers government funded community based services to Aboriginal and Torres Strait Islander people residing on the Central Coast of New South Wales.

Bungree is the largest Aboriginal not for profit organisation on the Central Coast and currently employs approximately 35 permanent and casual field employees. We operate and deliver 28 funded programs and services to the Central Coast, Newcastle and Upper Hunter.

Bungree's programs and services target our ageing, children, youth and families, as well as people with a disability and housing needs.

This presentation aims to provide information about Bungree's range of services and how you may be able to access and benefit from them.

If you would like to find out more about these services, please visit [www.bungree.org.au](http://www.bungree.org.au) or contact us on 02 43500 100 or email [enquiries@bungree.org.au](mailto:enquiries@bungree.org.au).





## Who are we? About Bungree Aboriginal Association

### Our Purpose

Bungree's purpose is to provide a wide range of funded programs and services that assist many of our vulnerable and isolated people and families such as our elderly and frail, people with a disability, people who are experiencing or are at risk of homelessness, children, youth and families.

### Our Goal

Bungree aims to ensure that all Aboriginal and Torres Strait Islander people residing on the Central Coast of NSW have access to the provision of high quality and effective services.



# My Aged Care Commonwealth Home Support Programme (CHSP)

## Bungree offers services to eligible recipients under the Commonwealth Home Support Programme (CHSP), an initiative of My Aged Care.

The CHSP helps you to stay independent and in your home and community for longer. Services offered by Bungree under the CHSP include:

**Flexible Respite** - If you are being looked after by a family member or friend, and need a break from your usual care arrangement, there are services that can help you or your carer to take a break.

**Podiatry** - Allied health foot care support.

**Social Support** - Helping you to maintain an active social life by having someone visit you in your home, or by arranging visits and outings in the community.

**Home Maintenance and Modifications** - Supporting you to stay in your own home by making your home safer and more secure.

**Personal Care** - Helping you continue living independently including everyday tasks such as bathing and getting dressed.

**Domestic Assistance** - Including help with housework and practical tasks around the home.

**Goods and Equipment** - Helping you to maintain your independence if you have a functional limitation or if you just find it difficult to carry out day-to-day living activities.

**Transport Service** – Providing transport to engagements such as medical appointments, hospital visits, other community services and more.

**Assistance with Care and Housing** – Support and help for people who

are homeless or at risk of being homeless including assessment and referrals to accommodation services and advocacy services.

**Sector Support and Development Officer** - Supporting the implementation of the CHSP, including assisting service providers and clients to move to new arrangements with a focus on consumer choice.

### How to access our Commonwealth Home Support Programme Services:

Referral to Bungree's Commonwealth Home Support Programme services is arranged through My Aged Care.

Please contact My Aged Care for more information

**P** 1800 200 422

**W** [www.myagedcare.gov.au](http://www.myagedcare.gov.au)

For assistance with your referral, please contact Bungree directly:

**P** 02 4350 0100

**E** [enquiries@bungree.org.au](mailto:enquiries@bungree.org.au)

**W** [www.bungree.org.au](http://www.bungree.org.au)





# My Aged Care Commonwealth Home Support Programme (CHSP)

## My Aged Care - Home Care Packages Programme

The Home Care Packages Programme is part of the Government's continuum of care for older Australians.

The Home Care Packages Programme is for people who have complex needs that can only be met by a coordinated package of care.

The objectives of the Programme are:

- to assist people to remain living at home; and
- to enable consumers to have choice and flexibility in the way that the consumer's aged care and support is provided at home.

### Package levels

There are four levels of home care packages:

#### Home Care Level 1:

Supports people with basic care needs.

#### Home Care Level 2:

Supports people with low level care needs.

#### Home Care Level 3:

Supports people with intermediate care needs.

#### Home Care Level 4:

Supports people with high care needs.

### Target Population

Although there is no minimum age requirement for a Home Care Package, the Home Care Packages Programme has been developed to assist frailer older Australians to remain in their homes.

### Accessing a Home Care Package

A person seeking Commonwealth funded aged care services should contact My Aged Care. If their care needs indicate they may need a Home Care Package, they will be referred for an assessment to determine if they are eligible.

An Aged Care Assessment Team (ACAT), or Aged Care Assessment Service (ACAS) will then assesses the person.

Please contact My Aged Care for more information:

P 1800 200 422

W [www.myagedcare.gov.au](http://www.myagedcare.gov.au)

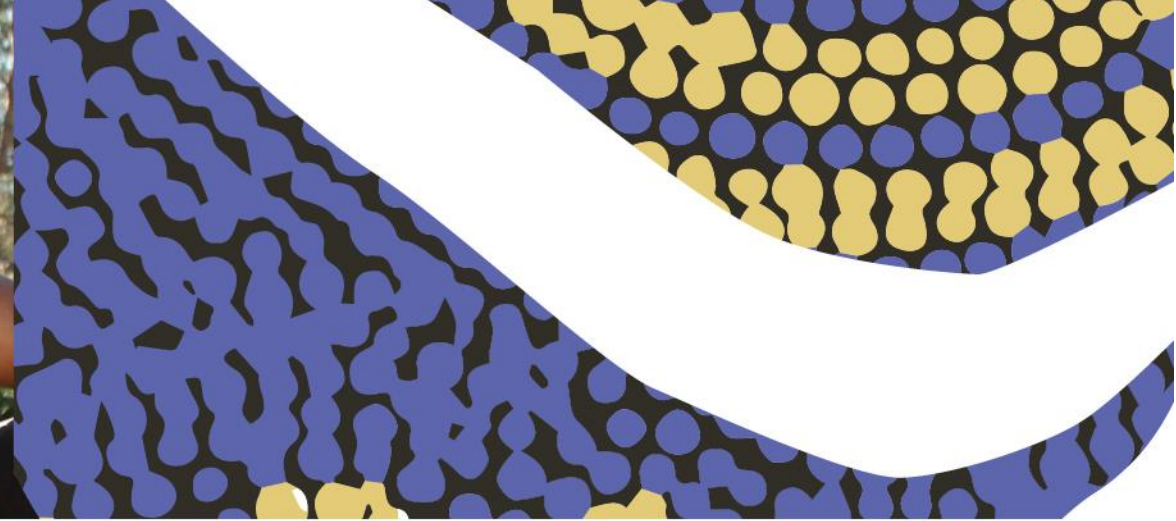
For assistance with your referral, please contact Bungree directly:

P 02 4350 0100

E [enquiries@bungree.org.au](mailto:enquiries@bungree.org.au)

W [www.bungree.org.au](http://www.bungree.org.au)





## Children, Youth & Family Services (CYFS)

Bungree Children, Youth & Family Services offers a range of support services for children, young people and their families in our community.

### **Intensive Family Based Service (IFBS)**

Bungree Intensive Family Based Service is an intensive program to assist eligible families that are at risk of having their child or children removed, or those needing intensive intervention to facilitate reunification and the safe return of children from out of home care to their families.

The primary focus of the service is safety, welfare and wellbeing of the child and/or young person in a culturally appropriate environment.

### **IFBS works within the principles of:**

- Self-determination, participation or in decision making as per the Children's and Young Person's (Care and Protection) Act 1998
- Maintaining partnerships with Aboriginal families and community
- Family/kinship approach to raising children

### **Target Group:**

- Children, young people and their families

### **Access to Program:**

- Referrals are received from NSW Family and Community Services Central Coast
- Service area covers the Central Coast region

# Children, Youth & Family Services (CYFS)

## Education Gaps Program (EGP)

Bungree Education Gaps Program provides an individual and family based service targeting educational and training needs for children, youth and family members.

The program assists the family to engage with their children's educational and learning process, assisting and encouraging parent's engagement with their children's schools and other services.

Bungree will liaise with families, individuals and service providers to increase access and participation by:

- Providing outreach and advocacy support
- Assisting with advice and guidance to specialist services e.g. occupational therapy speech therapy, psychological assessments
- Supporting and encouraging students in their engagements with schools
- Mentoring and assisting parents and carers in their children's learning experiences
- Assisting, preparing and supporting parents and older children in readiness for the workforce

## Target Group:

- Families with children in school with parents/carers preparing for the workforce or training and learning
- Individuals in school requiring assistance with schoolwork or transition to employment

## Access to Program

- Self-referrals, schools, various agencies, government and non-government agencies
- Service area covers the Central Coast region and Lower Lake Macquarie region (Toronto, Morisset, Belmont and Swansea)

## Specialist Homeless Services (SHS)

Our Specialist Homeless Services provide support to Aboriginal people with high and complex needs who are homeless or at risk of homelessness.

Support includes case management, advocacy, supported accommodation services and assisted referrals to other specialist support services to help Aboriginal people access and sustain stable housing.

## Target Group:

- Aboriginal and Torres Strait Islander young people, women, men and families

## Access to Program:

- Self-referral
- Various agencies, government and non-government for individuals or families at risk of becoming homeless or are homeless and who are situated on the Central Coast region

## How to access our Children, Youth & Family Services (CYFS) Services:

Contact Bungree Aboriginal Services today to find out more about how you can access our Children, Youth and Family Services:

**P** 02 4350 0100

**E** [enquiries@bungree.org.au](mailto:enquiries@bungree.org.au)

**W** [www.bungree.org.au](http://www.bungree.org.au)





# Bungree Transport Services

Bungree provides much needed transportation assistance to members of the Aboriginal community in the Central Coast region.



Our services are available for the elderly and people who have no or limited access to private or Public Transport due to their location, when they need to travel, their financial resources, or physical and cognitive capacities.

There is a range of assessment criteria to gauge eligibility. Contact Bungree to find out if you are eligible to access these services – you won't know until you ask!

Bungree Aboriginal Association provides transport services - for persons who are assessed as eligible - to the following places (including but not limited to):

- Medical appointments - GP, hospital and specialists
- Shopping trips – individual and group
- Community events
- Other community services
- Out of area appointments eg. Sydney and Newcastle
- Hairdressing appointments

How to access our Transport Services:

Please contact Bungree today to find out whether you are eligible to access Bungree's transport services.

P 02 4350 0100

E [enquiries@bungree.org.au](mailto:enquiries@bungree.org.au)

W [www.bungree.org.au](http://www.bungree.org.au)

Kim Brennan

Transport Worker

M 0417 584 672

E [kim.brennan@bungree.org.au](mailto:kim.brennan@bungree.org.au)





# Bungree Disability Services - NDIS

Bungree Disability Services is a registered provider for The National Disability Insurance Scheme (NDIS).



With a long and rich history with Central Coast locals, Bungree is excited to continue to provide quality services for years to come.

## Support Programs

Bungree Disability Services has been approved for the following 11 support programs:

- Assistance in coordinating or managing life stages, transitions and supports
- Assistance with daily life tasks in a group or shared living arrangement
- Development of daily living and life skills
- Therapeutic supports
- Assistive products for personal care and safety
- Assistance with daily personal activities
- Assistance with travel/transport arrangements
- Assistive products for household tasks
- Household tasks
- Participation in community, social and civic activities
- Management of funding for supports in a participant's plan

## How to access our Disability Services

If you believe you are eligible for disability services, please contact NDIS on 1800 800 110 or visit [www.ndis.gov.au](http://www.ndis.gov.au).

Or for more information on our programs, please contact Bungree Disability Services on (02) 4350 0100.



# Bungree Housing Services

As one of the largest Aboriginal providers of housing on the Central Coast, Bungree has been providing social and affordable housing since 1995 as a registered Aboriginal Community Housing Provider with NSW Aboriginal Housing Office. Since 2015, Bungree has been registered Community Housing Provider under the National Regulatory System – Community Housing as a Tier 3 provider.

We also support youth and families who reside on the Central Coast or are in transit and are homeless or at risk of being homeless in accessing services such as crisis accommodation, health or advocacy services.

Bungree owns and property manages for the NSW Aboriginal Housing Office in the Central Coast, Newcastle and Karuah regions.

## Housing Pathways

Housing Pathways is a new housing application system designed to make applying for housing assistance easier, simpler and fairer.

Applicants fill out a single form to apply for properties managed by Housing NSW or participating community

housing providers. Applicants can choose either public or community housing, but will maximise their opportunities for a housing offer if they register interest in both public and community housing.

A single state-wide waiting list, the NSW Housing Register, has also been created under the Pathways initiative. It combines the waiting lists of Housing NSW and participating community housing providers. All new applications are logged on the NSW Housing Register.

## How to access our Housing Services:

If you are seeking emergency or temporary accommodation or are at risk of homelessness, please contact Bungree for assistance through our Specialist Homelessness Services.

Alternatively, the Link2home telephone service is available 24 hours a day, 7 days a week, on 1800 152 152.

For Housing NSW Services, please contact the Housing Contact Centre on 1800 468 746.

If you require any further information or assistance with your Housing Application, please contact Bungree on 02 43500 100.







W [www.bungree.org.au](http://www.bungree.org.au)

P 02 4350 0100

F 02 4355 4256

E [enquiries@bungree.org.au](mailto:enquiries@bungree.org.au)

7B Pioneer Avenue  
Tuggerah NSW 2259

PO Box 3070  
Tuggerah NSW 2259

